



THE EVOLUTION OF HEALTHCARE SYSTEMS AND POTENTIAL DEVELOPMENTS

James Anderson*

Department of medicine and surgery, University of Birmingham, Birmingham, UK

Correspondence: James Anderson, Department of medicine and surgery, University of Birmingham, Birmingham, UK; E- mail: andryjen04@gmail.com

Citation: Anderson J (2024) The Evolution of Healthcare Systems and Potential Developments. Int J Ann Med Health Sci 2(1):1-5.

Received date: January 02, 2024; **Accepted date:** January 05, 2024; **Published date:** January 30, 2024

Abstract

Healthcare systems are critical to the well-being of populations worldwide. They encompass the organization, resources, policies, and practices that ensure the provision of medical services to individuals. A healthcare system refers to the infrastructure in place to deliver healthcare services, whether it is public or private, centralized or decentralized, and the structures that facilitate the treatment of illnesses and promotion of health. Healthcare systems are complex and require careful management, integration of technologies, and consideration of ethical, economic, and social factors. In this article, we will explore the types of healthcare systems, their key components, the technologies, and applications that support them, and the future trends shaping healthcare delivery.

Keywords: Healthcare systems; Populations; Illnesses; Social factors; Electronic health records

Introduction

There is no one-size-fits-all model for healthcare systems, as each nation tailors its system based on its needs, culture, and economic conditions. Healthcare systems can be broadly categorized into several bveridge model Named after British economist William Beveridge, this model is predominantly funded through taxation and is primarily state-run [1].

The government owns healthcare facilities and employs healthcare workers, ensuring that healthcare services are provided to all citizens free at the point of service. Examples of countries with this model include this system, healthcare is funded through social health insurance, often shared between employers and employees. Private health insurance companies are involved, but they are tightly regulated to ensure equity. In the NHI model, the

government provides universal coverage to citizens, but unlike the Beveridge model, healthcare is often delivered by private providers. The government acts as the single-payer, covering most of the healthcare expenses through taxes. Canada and Taiwan are examples of countries that use the NHI model. In some developing countries, particularly in low-income areas, healthcare systems are largely privatized and underfunded, forcing individuals to pay directly for services. This model is seen in countries with weak public healthcare infrastructure, like many sub-Saharan African nations or rural parts of India [2].

Key Components of Healthcare Systems

A well-functioning healthcare system is made up of several key components. These components are designed to ensure the effective delivery of care and to provide patients with access to the services they need.

Healthcare Providers: The backbone of any healthcare system is the providers of medical services. These include hospitals, clinics, physicians, nurses, and allied health professionals. Their role is to deliver care, whether preventive, curative, rehabilitative, or palliative. The qualifications, training, and specialization of healthcare providers are key factors in the quality of the healthcare system [3].

Healthcare Financing: Financing is one of the most important aspects of healthcare systems. The method of financing healthcare services can vary: it may be government-funded (through taxes), employer-funded, or patient-funded through private insurance or direct payments. Countries have developed various models to balance the cost of healthcare delivery while ensuring affordability for individuals.

Regulation and Policy: Healthcare regulation ensures that the system operates fairly, efficiently, and ethically. Policies around licensing, quality control, health insurance, and reimbursement rates are critical in shaping the accessibility and quality of care. Government entities often create policies aimed at controlling healthcare costs, improving quality, and addressing public health needs[4].

Materials & Methods

Applications of Technology in Healthcare Systems

Technology has revolutionized healthcare systems, improving efficiency, patient outcomes, and access to care. Healthcare applications and innovations are shaping how care is delivered across the globe.

Electronic Health Records (EHRs): EHRs have replaced traditional paper-based patient records, offering a more efficient way of storing, retrieving, and sharing patient information. EHR systems allow healthcare providers to track medical histories, medications, allergies, and treatments. The digitalization of health records improves communication among healthcare providers and enhances patient safety by reducing errors.

Telemedicine and Telehealth: Telemedicine refers to the use of digital communication tools to provide healthcare remotely. Telehealth applications allow patients to consult doctors, specialists, or counselors from their homes, reducing the need for in-person visits. This is especially beneficial in rural or underserved areas where healthcare access is limited. During the COVID-19 pandemic, telemedicine played a critical role in reducing the spread of the virus while maintaining healthcare access.

The Future of Healthcare Systems

AI and automation will continue to play a central role in healthcare, improving the speed, accuracy, and efficiency of diagnosis and treatment. AI will increasingly assist in clinical decision-making, enabling providers to deliver more personalized care. The growth of telemedicine and virtual health consultations will expand access to care, particularly in underserved areas. The convenience of remote healthcare will continue to evolve with innovations in virtual consultations, monitoring, and diagnosis.

Results

Healthcare systems are the backbone of societal well-being, playing a vital role in improving life expectancy, reducing disease burden, and enhancing quality of life. Across the world, healthcare systems vary widely in structure, financing, accessibility, and performance. While some countries operate predominantly public systems funded by taxation, others rely on private insurance models or mixed approaches.

In recent years, rapid demographic changes, technological advances, and global health challenges have exposed both strengths and weaknesses in existing healthcare systems, highlighting the urgent need for transformation and innovation (Figure 1).

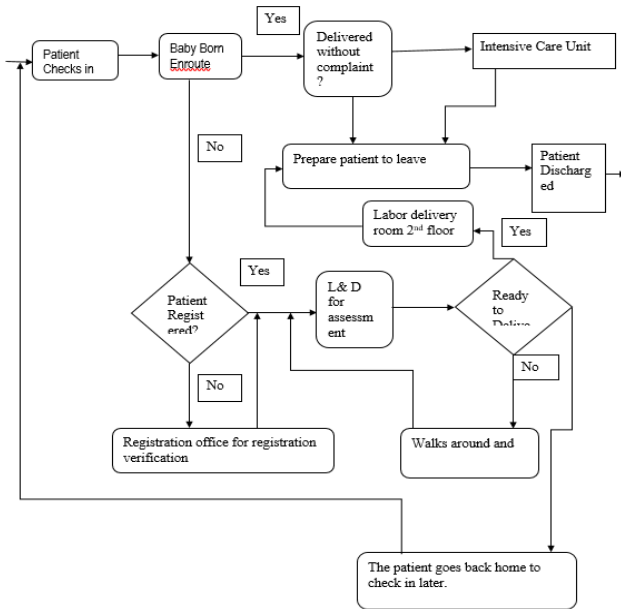


Figure 1: Labor and Delivery Patient Process

At present, healthcare systems can broadly be classified into four models: the Beveridge model (publicly funded and provided, as seen in the United Kingdom), the Bismarck model (insurance-based systems such as in Germany), the National Health Insurance model (single-payer systems like Canada), and the out-of-pocket model (common in low- and middle-income countries). Each model has its advantages and limitations

However, rising costs, workforce shortages, and inequitable access remain persistent challenges across all models. One of the most pressing issues facing healthcare systems globally is the growing burden of chronic diseases. Conditions such as diabetes, cardiovascular diseases, cancer, and mental health disorders are increasing due to aging populations, sedentary lifestyles, and environmental factors. Traditional healthcare systems, which are largely designed around acute, episodic care, struggle to manage long-term, complex conditions effectively. This mismatch has led to escalating healthcare expenditures and suboptimal patient outcomes, underscoring the need for a shift toward preventive and patient-centered care. Another significant challenge is healthcare inequality. Disparities in access and outcomes persist based on socioeconomic status, geographic location, gender, and ethnicity. Rural populations often face shortages of healthcare professionals and facilities[5,6].

while marginalized communities experience barriers related to affordability, health literacy, and cultural sensitivity. The COVID-19 pandemic further exposed these inequities, demonstrating how vulnerable populations are disproportionately affected during health crises. Addressing these gaps is essential for building resilient and inclusive healthcare systems.

Discussion

One of the central themes emerging from the analysis is the importance of equity in healthcare systems. Despite differences in system design, disparities in access and outcomes persist across countries. These inequalities are not solely a result of healthcare infrastructure but are deeply rooted in social determinants such as income, education, and geography(Figure 2).

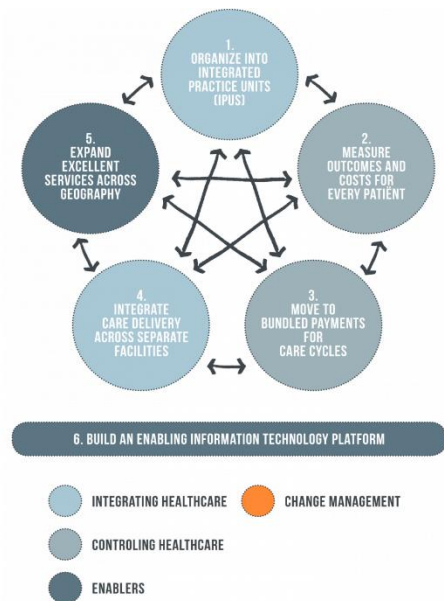


Figure 2: Value-Based Healthcare Framework

Technological advancements present both opportunities and challenges. Digital health tools, telemedicine, and artificial intelligence have demonstrated significant potential in improving access, efficiency, and quality of care. However, their successful integration depends on robust digital infrastructure, workforce training, and regulatory frameworks. Without careful implementation, these innovations risk widening existing disparities, particularly in low-resource settings with limited digital literacy and connectivity.



Hence, technology should be viewed as an enabler rather than a standalone solution, complemented by strong governance and ethical oversight. Integrated and value-based care models emerge as promising pathways to improve outcomes while controlling costs. By focusing on coordination, continuity, and measurable outcomes, these models align healthcare delivery with patient needs rather than service volume. Their success, however, relies on effective data sharing, collaboration across sectors, and alignment of financial incentives. Similarly, strengthening preventive and public health strategies offers long-term benefits but often faces challenges related to political commitment and delayed returns on investment.

Indicates that no single reform can address all challenges facing healthcare systems. A balanced, system-wide approach that combines technological innovation, equity-focused policies, workforce development, and preventive strategies is essential. Future healthcare systems must be adaptable, inclusive, and resilient to respond effectively to evolving health demands and global uncertainties.

The presented value-based healthcare framework reinforces the idea that improving healthcare systems requires coordinated, system-level transformation rather than isolated interventions. Each component in the model is interconnected, highlighting that sustainable improvement in outcomes and cost efficiency depends on simultaneous progress across organizational, financial, clinical, and technological dimensions. This holistic perspective is particularly relevant in the context of increasing healthcare demand, constrained resources, and heightened expectations for quality and accountability[7].

Organizing care into Integrated Practice Units (IPUs) represents a fundamental shift from specialty-based silos to patient-centered structures. By aligning multidisciplinary teams around specific conditions or care pathways, IPUs promote continuity, accountability, and shared responsibility for outcomes. However, implementing IPUs can be challenging due to entrenched professional boundaries and resistance to change. Successful adoption therefore requires strong leadership, cultural change, and clear role definition, supported by effective change management strategies.

Measuring outcomes and costs for every patient is a cornerstone of value-based care, enabling transparency and informed decision-making. Outcome measurement moves beyond traditional process indicators to include patient-reported outcomes and long-term functional results. While this approach enhances quality improvement efforts, it also introduces challenges related to data collection, standardization, and comparability. Healthcare organizations must invest in robust data systems and develop consensus on meaningful metrics to ensure that measurement drives improvement rather than administrative burden[8].

The transition to bundled payments for care cycles addresses inefficiencies associated with fee-for-service models, which often incentivize volume over value. Bundled payments encourage providers to collaborate, reduce unnecessary services, and focus on care coordination. However, financial risk sharing can be perceived as a threat, particularly in settings with limited experience in cost management. Risk adjustment mechanisms and phased implementation are therefore essential to ensure fairness and provider engagement.

Integrating care delivery across separate facilities further strengthens the patient journey by reducing fragmentation and duplication. Seamless coordination between primary care, hospitals, rehabilitation centers, and community services is especially important for chronic disease management and elderly care. Yet, integration requires interoperable information systems, aligned incentives, and trust among stakeholders—factors that are often lacking in fragmented healthcare environments[9].

Expanding excellent services across geography ensures that high-quality care is not confined to select institutions or urban centers. Scaling best practices can reduce regional disparities and improve equity. However, replication must account for local context, workforce availability, and infrastructure differences. Digital health solutions, such as telemedicine and remote monitoring, can play a crucial role in supporting geographic expansion without compromising quality. The enabling information technology platform underpins all components of the framework. Health information systems facilitate outcome tracking, cost analysis, care coordination, and performance feedback. Without a strong IT foundation, value-based reforms risk being superficial or unsustainable[10].

Conclusion

Healthcare systems are complex entities that require careful management and innovative solutions to meet the needs of populations worldwide. The integration of technology, the emphasis on efficiency, and a focus on patient-centered care will be pivotal in shaping the future of healthcare. As healthcare continues to evolve, it is crucial to ensure that healthcare systems remain inclusive, affordable, and effective in improving the health and well-being of individuals and communities.

References

1. Austin C, Arabena K. Improving the engagement of Aboriginal families with maternal and child health services: a new model of care. *Public Health Res. Pract.* 2021; 31(2): 21-27.
[Crossref][Google Scholar]
2. Zurynski Y, Deverell M, Dalkeith T, Johnson S. Australian children living with rare diseases: experiences of diagnosis and perceived consequences of diagnostic delays. *Orphanet J. Rare Dis.* 2017;12(1):1-9.
[Crossref][Google Scholar][PubMed]
3. Vandeborne L, van Overbeeke E, Dooms M, De Beleyr B, Huys I. Information needs of physicians regarding the diagnosis of rare diseases: a questionnaire-based study in Belgium. *Orphanet J. Rare Dis.* 2019;14(1):1.
[Crossref][Google Scholar][PubMed]
4. Zhao Y, Cheng S, Yu X, Xu H. Chinese public's attention to the COVID-19 epidemic on social media: observational descriptive study. *JMIR.* 2020 ;22(5):e18825.
[Crossref][Google Scholar] [PubMed]
5. Liang CS, Li DJ, Yang FC, Tseng PT, Carvalho AF. Mortality rates in Alzheimer's disease and non-Alzheimer's dementias: a systematic review and meta-analysis. *Lancet Healthy Longev.* 2021;2(8):479-488.
[Crossref][Google Scholar] [PubMed]
6. Salac RA, Prince M, Ferri CP, Acosta D, Albanese E, Arizaga R, Dewey M, Gavrilova SI, Guerra M. The protocols for the 10/66 dementia research group population-based research programme. *BMC public health.* 2007;7(2):1-8
[Crossref][Google Scholar][PubMed]
7. Koren D, Laidsaar-Powell R, Tilden W, Latt M, Butow P. Health care providers' perceptions of family caregivers' involvement in consultations within a geriatric hospital setting. *Geriatric Nursing.* 2018 ;39(4):419-427.
[Crossref][Google Scholar][PubMed]
8. Barnett BS, Mulenga M, Kiser MM, Charles AG. Qualitative analysis of a psychological supportive counseling group for burn survivors and families in Malawiv. *Burns.* 2017 ;43(3):602-607.
[Crossref][Google Scholar][PubMed]
9. Kim B, Wister A, O'dea E, Mitchell BA, Li L, Kadowaki L. Roles and experiences of informal caregivers of older adults in community and healthcare system navigation: a scoping review. *BMJ open.* 2023;13(12):e077641.
[Crossref][Google Scholar][PubMed]
10. Gillespie R, Mullan J, Harrison L. Managing medications: the role of informal caregivers of older adults and people living with dementia. A review of the literature. *JCN.* 2014;23(23-24):3296-3308.
[Crossref][Google Scholar][PubMed]